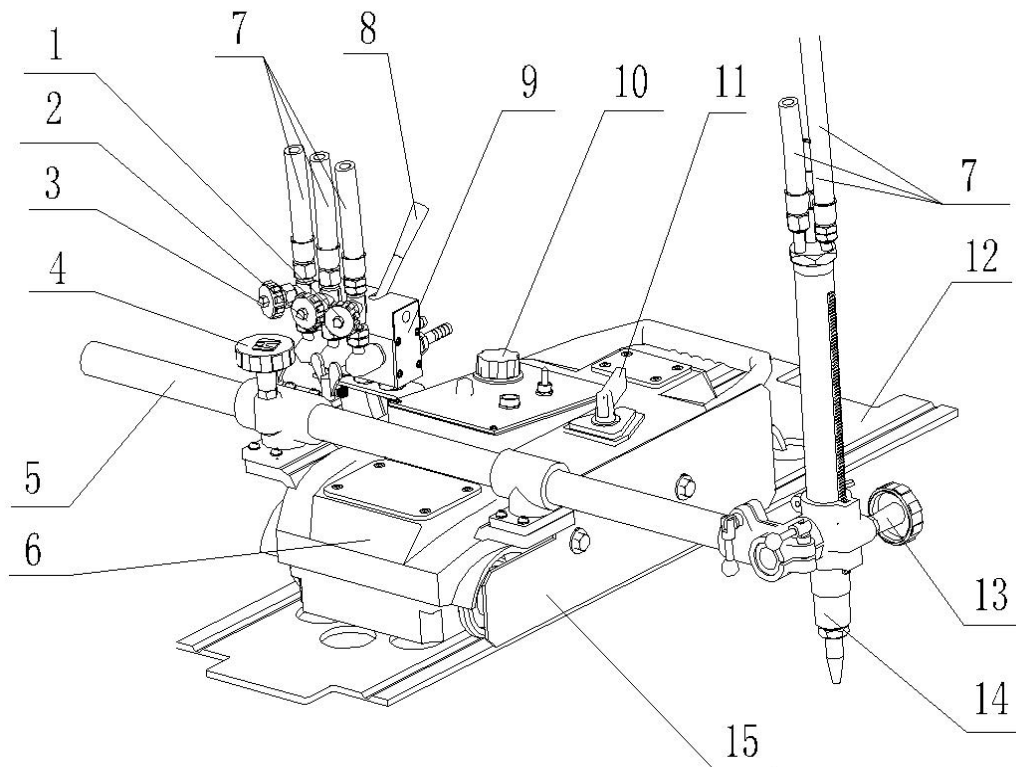


GCD-300

Specifications

1. Weight	: 23 KG
2. Machine dimension	: 510mm×1270mm×670mm
3. Speed control	: SCR control
4. Power source	: AC 220V±10% 50HZ
5. Cutting speed	: 50~750/mm/min
6. Cutting thickness	: 6-300mm
7. Bevel angle	: 0-45°
8. Diameter of cutting circle	: ø200-ø2000mm
9. Tip	: G02(for acetylene),G03(for propane)
10. Motor	: DC 110V 50HZ 30W rotation speed 4200r/min



1. Gas two port valve : Adjust gas flow	9. Gas distributor
2. Preheating oxygen valve	10. Adjusting speed hand wheel : Adjust speed of machine walking
3. Cutting oxygen valve	11. Clutch handle
4. Traversing hand wheel : Rotate hand wheel to make torch move horizontally.	12. Jaw track
5. Traversing gear rack	13. Torch adjusting hand wheel: Rotate hand wheel to adjust distance between tip and steel plate.
6. Body	
7. Hose for delivering gas	
8. Quick switch handle: Handle has three step switches. They are close preheating and cutting. If the step is close, all gas is close.	14. Torch
	15. Thermal baffle: Impede heat diffusion to machine inner.