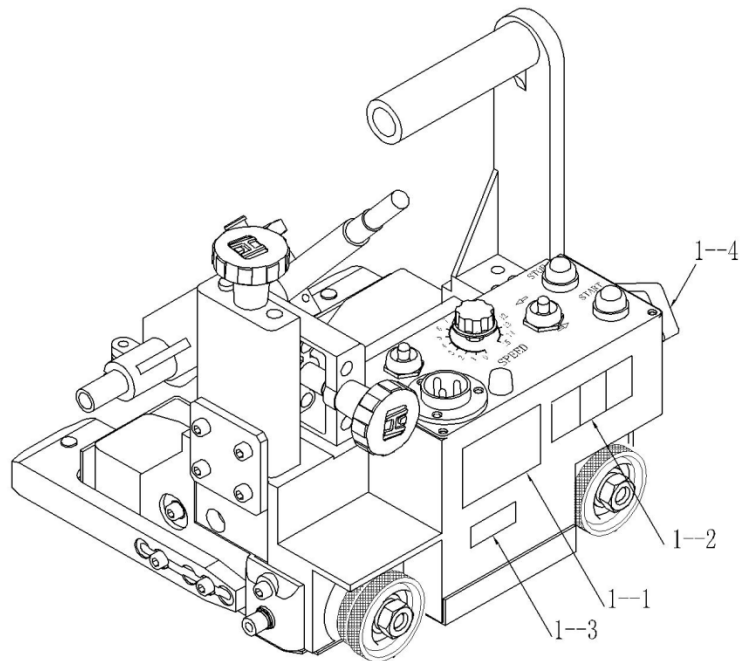


HK-6A-D

- Strong machine body, durable and portable.
- Low barycenter designing, with haul of 16kg, smoothly moving.
- Magnet controlling handle makes setting up easy; welding both in left and right.
- Inductor in both end can make machine stop when welding end.
- Flat rail for this carriage is good for welding of long line and straight angle.
- Standard rail: 1.8m; can be connected as required.



Our company's multifunction angle weld trolley is wonderful. It has many functions. It can make the person, who isn't proficient, do angle weld easily. Chief characters are following:

- 1) Small capacity, low gravity center, lightweight, portable.
- 2) High magnetism magnet increases dependability of operating and draft load to assure the machine operates smoothly.
- 3) It can operate many machines on the base of increase dependability of operating and self-stop function.
- 4) The guide transfer switch can make it move toward right/left.
- 5) Guide equipment is screw lockage-on type. Guide wheel's height can be modified by three methods.
- 6) New spacing switch system increases the limited height of distance plate.
- 7) All of the top characters are wonderful on the aspect of "effective welding" and "operated by primary person".

Specifications

Item	Specifications
Type	HK-6A-D
Weight	6.9 Kg
Driving method	Four ferrous rims driving
Hauling power	16 Kg
Running speed	150~1500 (mm/min)
Tracking mode	Guide wheel type
Height of torch	Three chooses
Adjusting scope of torch	Horizontal angle: 40° ~ 55° Up /down moving: 45mm Front/rear moving: 45mm
Torch	Bended welding torch or straight welding torch
Locked equipment of torch	Suit for bended welding torch or straight welding torch
Needed welding length	Front-end:127mm; end:127mm
Self-stop function	By spacing parts of front-end and after end.
Size(length*width*height)	260x260x264 mm