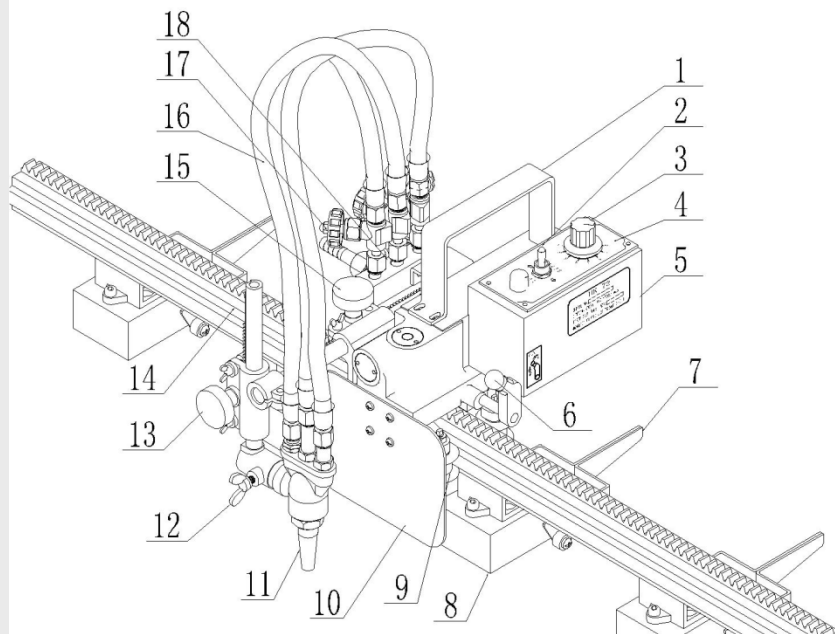


HK-72T

- The main body is made of high strength aluminum alloy, produced precisely by die-casting, light and compact.
- The weight is 5.6kgs, easy for operating.
- Attached with angle gauge which can make torch turn precisely to bevel.
- Attached with clutch unit, loosing the handle of clutch, the machine can move along the rail steadily.
- The rail is made of hard rubber which can be used for three dimension and two-dimension curve cutting. Inside of rubber rail there is the flexible core material which can avoid uneven cutting occurred by some general rubber rail.
- Mainly used in different shapes of steel cutting such as profiled bar, boiler. Shipbuilding, and curve plate,etc.

Specification

1. Weight:	: 11kgs (including rails)
Main body:	: 4.5kg
Rail:	: 6.5 kg
2. Overall size of main body:	: 1905mm×195 mm×140 mm
3. Rail size: (length × width × height)	: 1000 mm×42 mm×30 mm, Lengthen type
	1D (Straight AL rail with 4pc magnet)
	2D (Two dimension rubber rail with 5pc magnet)
	3D (Three dimension rubber rail with 5pc magnet)
4. Power	: A C 220V±10%
5. Speed control	: knob switch
6. Cutting speed	: 150～700mm/min
7. Cutting angle	: 0-45 degree
8. drive	: gear-rack driving mode
9. Cutting thickness:	: 5～30mm (standard accessory)
10. Tip	: G02 (suitable for acetylene) or G03 (suitable for propane)
12. gas	: oxygen, acetylene or liquefied petroleum gas
13. smallest radius of curve	: 2,000mm (three-dimensional cutting track)
	: 2,500mm (two-dimensional cutting track)



1. Handle: Catch the handle when you carry machine.	10. Thermal baffle: To prevent the heat diffusing into the inner of machine.
2. Switch: When it is set on arrow direction, the machine starts to walk towards to this direction.	11. torch
	12. groove cutting screw
3. Speed controller: Increase the speed if it is rotated clockwise.	13. Torch lifting knob: It is used to adjust the vertical position of torch.
4. Control panel: Switch and speed controller is used to control machine.	14. Rubber track: There are three types: 1D——straight AL track; 2D——two-dimensional cutting track; 3D--three-dimensional cutting track. Choose suitable track according to the sharp of work.
5. Host machine	
6. Clutch rod: When it is on right, the clutch is OFF. When it is on left, the clutch is ON.	15. Torch sliding knob: To adjust the horizontal position.
	7. Control rod: Use it to assemble or demount track.
8. Magnet: It fixes the track to steel plate. Use control rod to make magnet be on or off.	17. valve
	9. Sliding roller wheel: The wheel and track are used to keep machine stable.