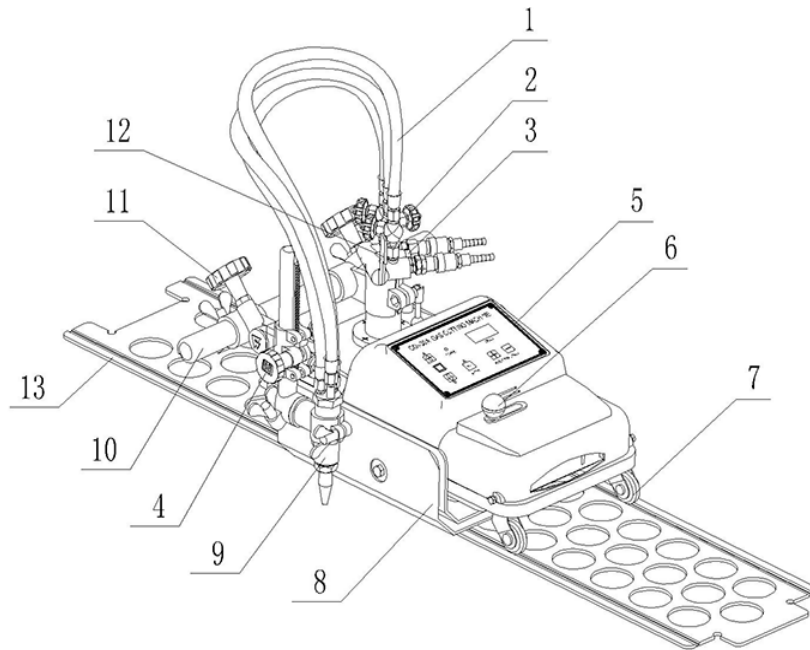


CG1-100A

Specifications

1.Weight	25.5kilograms
2. Machine dimension	430mm×230mm×280mm
3. Speed control	Integrated circuit
4. Power source	AC 220V 50HZ
5. Cutting speed	50~750mm/min
6. Cutting thickness	8-100mm
7.Groove angle	0-45 degree
8.Diameteral of cutting circle	ø200-ø2000mm
9.Tip	G02 1#、2#、3#
10.Motor	DC 110V 0.5A 30W 3600-4600r/min
11.Convex guide rail	6Kg(2pc)
12.Concave guide rail	8Kg 1.8m/pc or 11Kg 1.2m/2pc



1. Hose: Connect them between distributor and torch. The three hoses are used individually for fuel gas, preheating oxygen and cutting oxygen.
2. Gas two-way valve: To adjust gas-flow rate.
3. Gas distributor.
4. Hand wheel: To adjust the up-down distance of torch by the wheel.
5. Main machine.
6. Clutch hand knob
7. Universal wheel
8. Thermal baffle: To prevent the heat diffusing into the inner of machine.
9. Torch body.
10. Cross gear rack
11. Cross hand wheel: To adjust the horizontal distance of torch on cross bar.
12. Fast switch knob: The knob is divided into three grapes: "close", "preheating oxygen" and "cutting". It will close all the gas valves if the knob is on the "close" position.
13. Guide rail: There are two types: convex wheel and concave wheel.