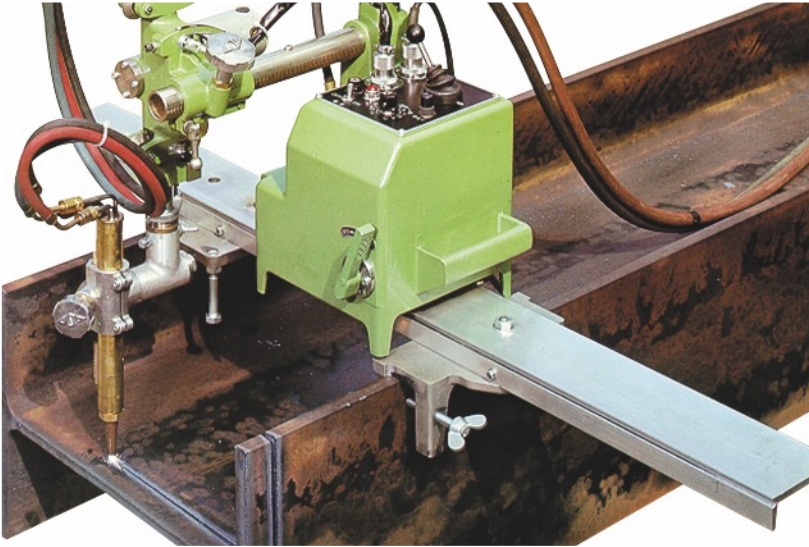


MINI-MANTIS II

Portable Beam Gas Cutting Machine



For Easy, Accurate Clean Cuts

The Mini-Mantis II is a semi-automatic gas cutting unit for rapid and precise cutting of H-beam web and flange. For ease and optimum efficiency, the unit features:

- Rail and main unit have been combined resulting in reduced setup time.
- Single-lever rail clamping
- PWM control for smooth, even cutting speed.
- Unit is constructed for easy maintenance and serviceability

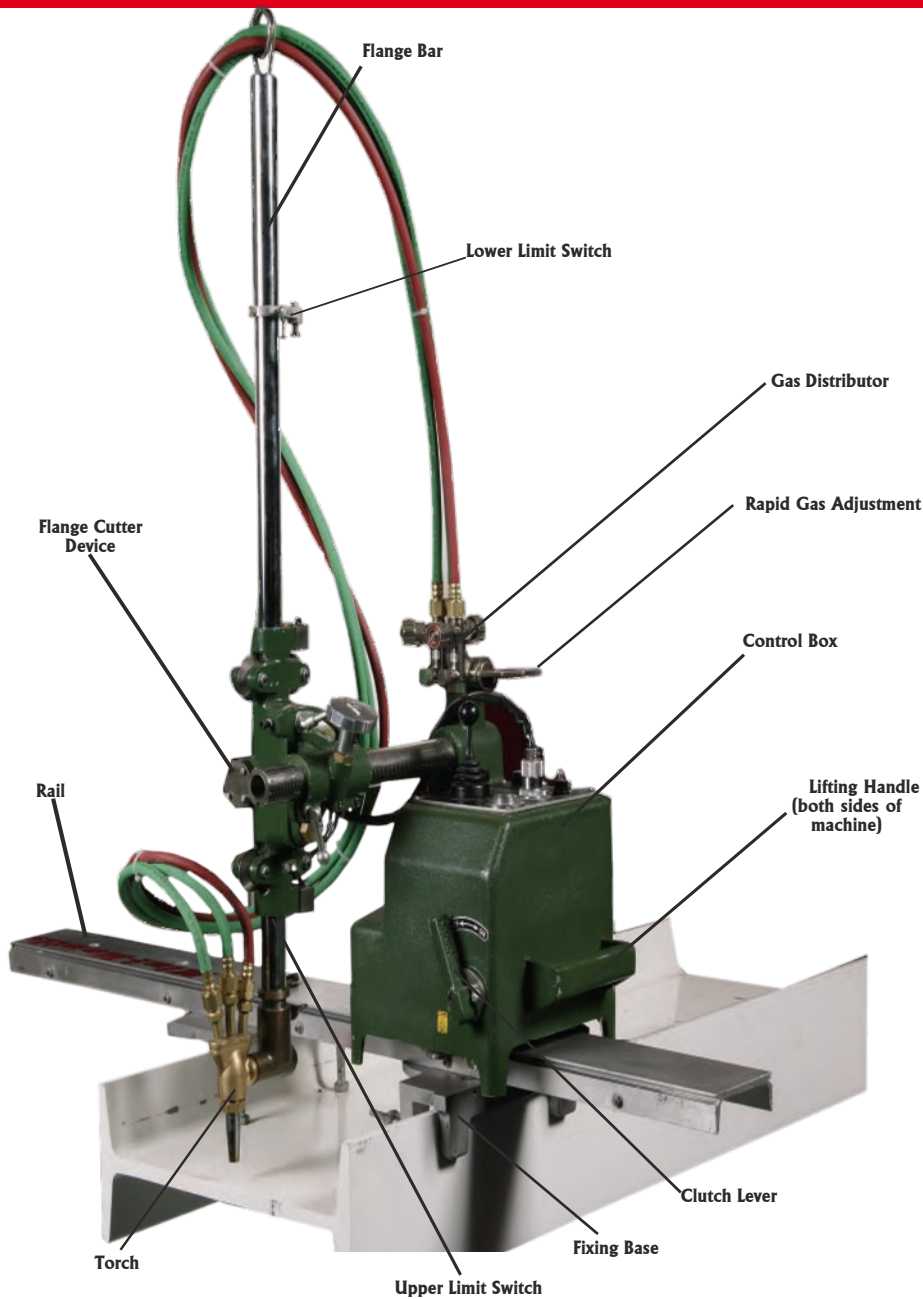
Add to these features KOIKE's quality construction, ensuring durability and trouble-free operation, and you have an economical, efficient, compact gas cutting machine for small H-beam steel.

Features & Benefits

- **Oxy Fuel Beam Cutter**
Bevel or straight cut steel beams
- **Automatic Pilot Flame**
Set preheat only once; pilot flame between cuts saves time and gas
- **Three Rail Sizes**
For efficient setup in cutting web
- **Long Flange Bar Option**
For cutting of longer flanges up to 47 in (1200mm)
- **4-Way Jog Direction Control**
Automates vertical and horizontal travel
- **Adjustable Rail and Rack Bar Angle**
Allows diagonal cuts on web and flange
- **Lightweight and Portable**
Total weight including rail is only 44 lb (20kg), making it easy to carry and use in tight spaces
- **High Quality Tips**
Koike's superior design Series 100 torch tips are included to ensure fast, smooth cuts
- **Optional Snap Valve**
One-touch on/off gas valve



KOIKE ARONSON, INC. / RANSOME



Why Mini-Mantis II?

■ Rapid Gas Adjustment

Koike's unique "One Touch Flame Adjuster" is used in the gas distribution system. The flame only has to be adjusted once, after which a flip of a lever stabilizes the flame at that setting. The pilot flame can be left on until the next cutting operation which results in a considerable savings of time and gas.

■ Highly Automated

The combination 4-way drive and cutting switch turns on the cutting oxygen and drive motion in one step. With the exception of the flange adjustment, nearly everything is automatic. For example, setting the stop to the flange size shuts off the cutting oxygen when flange cut is completed.

■ Easy, Functional Controls

Power switch, speed control, 4-way torch direction switch, rapid traverse, and indicator lamp are all grouped for easy use on the control panel.

Koike Gives You Choices for Optimum

The Mini-Mantis II comes standard with the ST Short torch and the available option of adding the LT Long torch.



Protractor on Rail



Diagonal Web Cutting



Diagonal Flange Cutting



Flange Bevel Cutting

Easy To Use

No need to prepare or move workpiece.

The Mini-Mantis II has two motors, one for web-cutting and one for flange work. For web cuts, the carriage is driven along the rail; for flange cuts, the torch assembly is moved vertically through a rack-and-pinion drive. There is no need to turn and mark the workpiece.

Designed to make diagonal cuts on the flange as well as the web, while bevel cutting.

The angle is set by adjusting the rail using built-in protractor or the vertical rack-bar resulting in high-precision diagonal cuts that are clean and sharp. Achieve the highest quality flange and web bevel cuts ever!

Two for the price of one- H-beam and plate cuts are possible.

The Mini-Mantis II is designed for cutting H-beams, but can also be used on plate as well. The flexibility of this machine makes it an ideal choice for your beam and plate cutting needs.

Quality cut-surface finish.

The smooth, steady, automatic cutting travel eliminates the need for secondary operations. You can begin welding as soon as you've finished cutting.

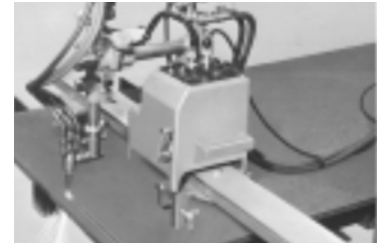


Plate cuts also possible



Light and portable

Capacity

Right Angle Cutting

A= 6-24 in (150-600mm)

*Optional A: 6-36 in (150-900mm) or 6-60 in (150-1500mm)

B= 6-16 in (160-400mm)

*Option of up to 31 in (800mm)

Diagonal Web Cutting

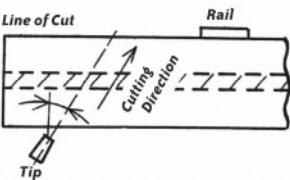
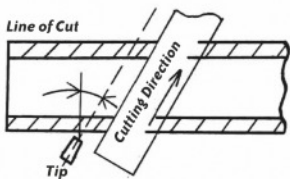
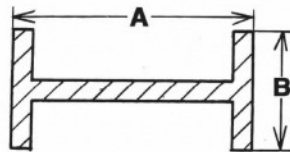
35° at 16 in (400mm)
diagonal web length

Bevel Cutting

35° for both web and
flange

Flange Diagonal Cutting

30° at 16 in (400 mm) maximum diagonal flange dimension

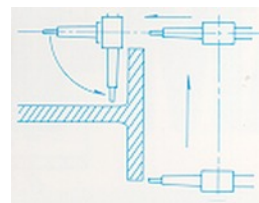


Koike Offers Versatility For Optimum Cutting

Torch Sets

The Mini-Mantis II comes standard with the ST Short torch and the available option of adding the LT Long torch.

The ST model is the short torch version which allows cutting of several H-beams together, where little spacing is available.



The LT model is the long torch version which simplifies web-cutting as the web-to-tip distance can be set with the torch vertical. In addition, angel adjustment of the torch is not necessary when making diagonal web cuts.

SPECIFICATIONS	WEB CUTTING	FLANGE CUTTING
Cutting Thickness	¼ - 1-¼ (5-32mm)	
Cutting Speed	4-28 in/min (100-700 mm/min)	
Speed Control	PWM Control	
Drive Motor	DC shunt-wound motor, 5W (with reduction gear)	
Drive System	Friction Roller	Rack and Pinion
Weight	44 lb (20kg)	
Rail Length (600L Standard)	44 in (1,100mm)	
Rail Fixing	Clamping bolts	

Koike 100 Series cutting tips are recommended for best performance. Lifetime warranty on torch against a sustained flashback when using genuine Koike cutting tips (damaged tip and torch must be returned).

MODELS DESCRIPTION	PART#
Acetylene Kit	MANTIS102
LPG Kit	MANTIS106
(1) Mini-Mantis II	ZA425-1005
(1) Vertical Drive - ST Short torch w/ 3 tips; size 0,1,&2 (Specify model tips 102 for Acetylene or 106 for LPG)	ZA425-1027 Koike 100 Series Tips
(1) 600L Standard Rail - 24 in (600mm)	ZA425-1201
Other Size Rails Available	
600L Standard Rail - 24 in (600mm)	ZA425-1201
900L Rail - 35 in (900mm)	ZA425-1202
1500L Rail - 60 in (1500mm)	ZA425-1203

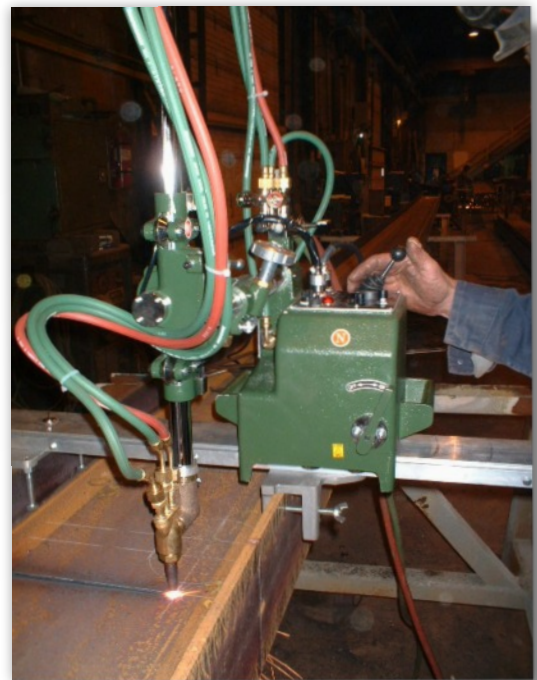
OPTIONAL EQUIPMENT	
Mini-Mantis II - unit only	ZA425-1005
Vertical Drive -ST Short torch with 3 tips; size 0,1, & 2 (Specify model tips 102 for Acetylene or 106 for LPG)	ZA425-1027 Koike 100 Series Tips
Special Wide Flange Slide Bar 47 in (1200mm) increases flange cutting from 16-31 in (400-800mm)	ZS32027
ST -Short Torch set (included w/ ZA425-1027)	ZM32047
LT -Long Torch set	ZS32000
Snap Valve	SNAPVALVEII



**LIFETIME
TORCH WARRANTY**

**Against a sustained flashback
when using a genuine Koike
cutting tip**

(Damaged torch and genuine
Koike cutting tip must be
returned)



Koike Techno Center Products

Koike Aronson Inc.
P.O. Box 307, Arcade, New York 14009
Phone (585) 492-2400 Fax (585) 457-3517
www.koike.com



MINI-MANTIS II 08/15 KENG